



Total Interoperability and Learning Outcomes with NILE

Release Date: Wednesday, 3 June 2020

Webinar Time: 1200-1300 (EDT)

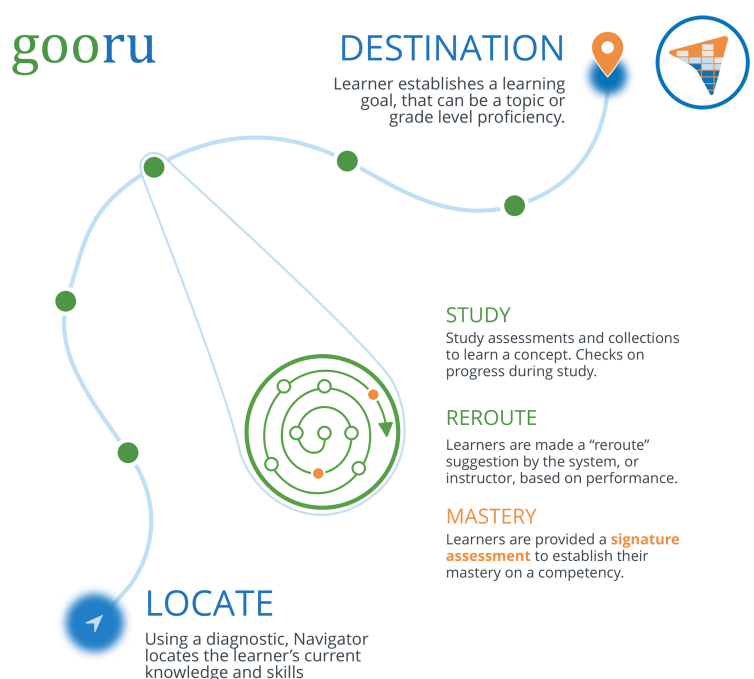
Speakers:

Prasad Ram (CEO and Founder, Gooru)

Michelle Newstadt (Director of Research and Innovation, Gooru)

“GPS for Learning” is here! ADL-Gooru with the NILE project brings a learning experience that echoes Google Maps. NILE “locates” learners for their knowledge and mindsets with high-precision against every competency and uses standards compliant interoperable learning content and tools to create personalized adaptive pathways, and provides real-time data to all stakeholders. Come see how NILE brings to personalized learning the elegance and ubiquity that Google Maps brings to navigation with the AI sophistication necessary to power it.

Subject: Gooru will demo a “Google Maps for Learning” to share how Navigator for Integrated Learning Experience (NILE) enables a highly distributed and disparate learning ecology to achieve outcomes. We focus on two key scenarios: a) How NILE achieves outcomes for learners by locating their knowledge, skills, and mindsets, routing them to their learning destination and rerouting them based on performance until they achieve mastery; b) Navigator tool can be integrated in any application to federate distributed services by exchanging learner identity and dynamically update that with xAPI activity stream data from the service. We show how NILE’s use of interoperability standards enables it to interact with the ecology of learning services. We will demonstrate the following Navigator tools: Learners, Instructors, Mission Control, and Library. Learning goes beyond gaining curriculum knowledge to develop non-cognitive skills. We will highlight the use of AI to operationalize principles of learning to orchestrate distributed learning content and tools to optimize outcomes for every learner.



Audience: Researchers, Technologists, and educators who innovate and practice personalized adaptive learning. Executive decision-makers across K12, HigherEd, Skills, and Professional Learning, looking for modern learning and performance environment approaches that go beyond traditional learning and tracking approaches. Especially of interest to those interested in integrated learning experience and total interoperability.

How: Virtual using GoToWebinar. Use the following link to register for the webinar and reserve your virtual seat: <https://attendee.gotowebinar.com/register/3289461020707174923>

Speaker Biography: At Google, Pram led a large project on Google Maps. As a 20% project, Pram devised a “Google Maps for Learning” using open education resources. In 2011, Pram left Google to found Gooru, a non-profit education technology start-up to develop the free and open Learning Navigator. Prior to Google, Pram worked at Yahoo! to develop their media platform, at Dynamx Technology to develop a data aggregation tool for media companies, and at Xerox PARC, he invented a Digital Rights Management technology. He has a B.Tech in Computer Science from IIT-Bombay and a Ph.D. in Computer Science from UCLA.

Questions: If you have any questions about the webinar, please contact the Technical Webinar Coordinator, Liz Bradley, at elizabeth.bradley.ctr@adlnet.gov.